



A Report on Your City Government 1966-1967

BURLINGTON

FINANCING A CITY'S PROGRESS

1966-67 Budget

INCOME

Property Tax	1,776,191.72
Water & Sewer	1,440,311.93
Licenses & Fees	111,293.80
State Shared Taxes	362,217.12
ABC Store Profits	105,465.76
Assessments	264,006.92
* Other	306,793.84
Recreation & Parks	50,629.88

* Includes Parking Meters, Rentals, Court, Interest, and Sales Tax Refunds

EXPENSE

* General Government	668,712.16
Fire & Police	883,584.24
Public Works	1,022,717.81
Water & Sewer	793,709.65
Recreation	155,316.51
Debt Service	437,544.02
Library	35,200.00
Airports	52,096.47

* Includes administration, Finance, Personnel, Engineering, Court, Garage, Publicity Reserves, and Contingencies

FINANCING THE CITY SERVICES

It costs \$4 million to operate our City Government during the 1966-67 fiscal year. The chief source of income for Burlington is property tax based on a tax rate of \$1.50 per \$100 valuation (this tax rate has been the same for the past 7 years.) The total assessed valuation of the City of Burlington is \$118,000,000.00.

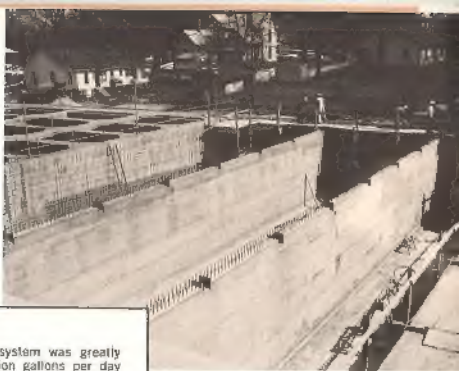
Shown are the revenue and expenses of the City of Burlington in 1966-67.

STATISTICS

Average daily water use	3,511,650 gal.
Full time city employees as of 7-1-67	334
Population	36,000
Area in square miles	13.96
Miles of paved streets	147.01
Miles of unpaved streets	38.18
Acres of Parkland	282
Altitude (feet above sea level)	676

City of Burlington
Box 169
Burlington, North Carolina 27215

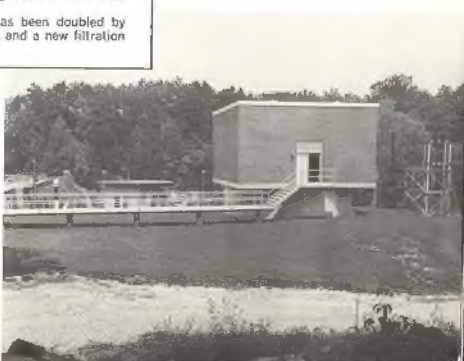
Bulk Rate
U. S. Postage
PAID
Permit No. 191
Burlington, N. C.



UTILITIES

Our water treatment and distribution system was greatly improved by the completion of a 24 million gallons per day raw water pump station and a 1.5 million gallon elevated water storage tank.

Also the capacity of the water plant has been doubled by the addition of three sedimentation basins and a new filtration process.



MAJOR ACTIVITIES

Fiscal Year 1966-67

- Completed 24 M.G.D. Raw Water Pump Station
- Installed 13,540 feet outfall line
- Began construction of new Municipal Building
- Made 233 water taps
- Installed 16,940 feet of sanitary sewer mains
- Fire calls answered - 786
- Gallons of water used - 2,687,230,000
- Paved 20,209 feet of streets
- Installed 6,782 feet of storm sewer
- Police calls received - 45,614
- Purchased 50 acres for Nature Park
- Endorsed redevelopment plan for central business district
- Completed 1.5 million gallons elevated water storage tank
- Established Burlington Housing Commission
- Resurfaced 74,675 feet of streets
- Installed 22,179 feet of water mains
- Issued 4,443 Building Permits



CITY OF BURLINGTON
BURLINGTON, N. C.

Fellow Citizens:

It is a pleasure to present a condensed report on the operations of the City of Burlington. It is hoped that this 1966-67 report will help to acquaint each of you more thoroughly with the services which are performed by the City of Burlington and of the major activities of the past fiscal year.

This past year we continued to experience growth and to improve our community facilities. We began work on detailed studies and plans that will have long range effects on the future of our City.

The City Council welcomes your continued interest and suggestions concerning needed improvements. Through the active support of its residents Burlington will continue to grow and prosper.

Respectfully submitted,

The City Council
City of Burlington

Council Meeting Date
1st and 2nd Tuesday of each month
7:30 P.M. — City Hall

Burlington City Council





Recreation

With increased leisure time, recreation has become more necessary to our way of life, and your department has responded by providing a program of activities touching citizens from pre-schoolers to Senior Citizens.

Special work with mentally retarded and handicapped include meetings, parties, Camp Green Leaves (Day Camp) and swimming instruction. Numerous activities from January to December offer outlets to persons interested in tennis, softball, youth football, baseball and basketball, instruction classes, pre-school Storyhour, exercise classes and an extensive Senior Citizen program.

Water sport enthusiasts, fishermen and hunters find nearby Lake Burlington & City Lake a haven for their interests, and the public can enjoy two swimming pools during the summer months. Dog owners have a wonderful opportunity of benefiting from obedience classes and shows the Recreation Dept. co-sponsors throughout the year. Covered and enclosed picnic shelters accommodate thousands of citizens with our parks providing outside picnicking facilities as well as amusement rides for the youngsters.

Recently the county's first Nature Trail was laid out in City Park and one of the few Recreation-sponsored nurseries is operated at Richmond Hill Center to benefit working mothers. Located in our Center is the McDade Wildlife Museum that attracts many visitors annually.

Having conducted the Women's World Softball Tourney here in 1965, in addition to three state and numerous districts and southwade tournaments, Burlington now has become known as "The Softball City".



ENGINEERING

As evidence of the continued growth of the City, the engineering department has played a major role in the development of Burlington during the past year. The engineering staff has designed streets and sidewalks, prepared specifications, designed water and sewer lines, regulated street openings, prepared construction details for culverts and storm drainage facilities, prepared petitions, completed surveys and map revisions and reviewed subdivision plats.



Building Inspection

To insure that City residents will enjoy a safe and healthy environment, the inspection department closely checks all building details.

The inspection department enforces the city building code, zoning, plumbing and electrical ordinances to protect the property owner and citizens against the hazards of non-conforming practices and inferior workmanship.



FIRE DEPARTMENT

Around the clock every day of the week and every day of the year the citizens of Burlington are protected by their Fire Department. They serve the community in protecting life and property.

In recent years, emphasis in fire protection has shifted from extinguishing fires to fire prevention. In keeping with the trend the industrial fire prevention bureau was added to the local fire department to augment the fire prevention program. In this first year approximately 8,830 man hours were involved in industrial fire prevention training involving 668 men.

Even with an active fire prevention program the Burlington Fire Department responded to 786 calls.

PUBLIC SAFETY



POLICE DEPARTMENT

The Burlington Police Department took a significant step toward the prevention and control of crime and delinquency among juveniles by the creation of a youth Bureau Officer. The primary duty of the officer is to establish, develop and administer a sound program of crime prevention to eliminate conditions which induce criminal tendencies among children.

In September a major reorganization of the department was made to increase the efficiency of the department. The department now operates under a four platoon system which places more men in the patrol division. This allows the shifts to rotate and provides a more even distribution of personnel. In addition to the Youth Bureau and Patrol Division, there is a Traffic division, Records and Identification division and Detective division. Also the Traffic sign department, Parking meters, and Humane Officer come under the direction of the Police Department.



SANITATION DEPARTMENT

The health and appearance of our City depends to a great extent on the work of the sanitation department. This department provides residential and business pickup as well as trash pickup and sweeping and flushing of the streets.



A new 29,000 square foot Service Center Building was put into use this year. The new facility will serve as an all-purpose mechanical repair shop for maintaining City vehicles. The Service Center is located on East Summit Avenue.



STREET CONSTRUCTION

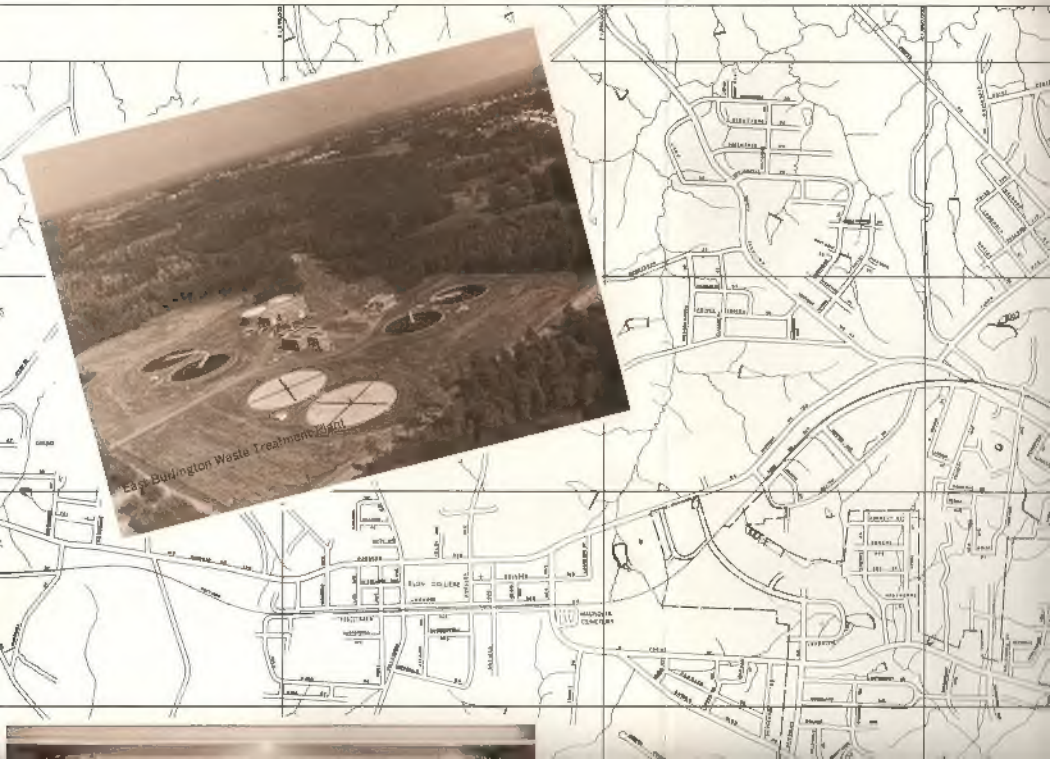
Mayor Seamon and members of the City Council officially opened a new section of Maple Avenue.



Gunn Street - One of many local street improvement projects. Approximately 74,675 feet of streets were resurfaced and 20,209 feet were paved during the 66-67 fiscal year.

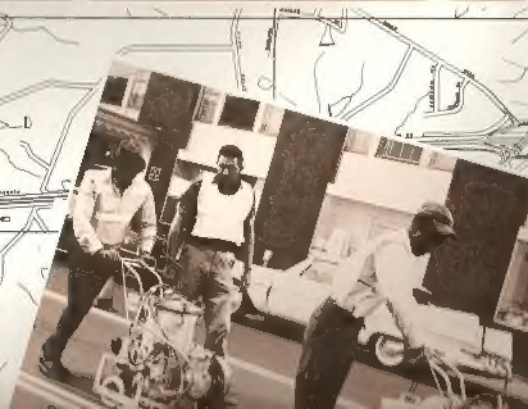


East Burlington Waste Treatment Plant





McDade Museum





PHONE N

- Police
- Fire
Fire Calls
Fire Prevention
Chief's Office
#2 Fire Station
- Personnel Office
- Municipal Court
- City Clerk
- City Manager
- Engineering Department
- Recreation & Parks
- Sanitation Department
- Street Department
- Tax Collector
- Consumer Services
- Cemetery
- Service Center
- Water & Sewer Construction
- Public Works



BURLIN